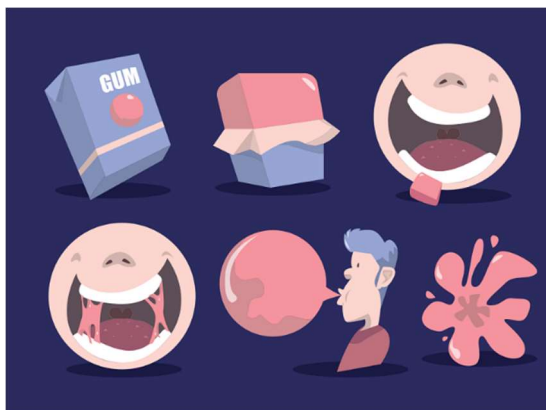


How is bubble gum made – Passive Voice

1. Discuss the following questions:
 - a) Do you know how some of your food products are produced?
 - b) What kind of machines are used in food production?
 - c) What do you think bubble gum has inside?



VIDEO:

2. Watch the video and put the sentences below in the correct order:

- 1 A gum base is poured into a mixer and color and flavoring is added.
- 2 They pour in glucose syrup to the mixture.
- 3 They blend the ingredients for about 20 minutes to put everything together.
- 4 The mixture is ready when it looks like a bread dough.
- 5 They transfer the mixture to another machine.
- 6 The machine squeezes the mixture to create thin strips of gum.
- 7 Another machine squeezes the mixture to the size of bubble gum.
- 8 The gum goes to a cooling chamber for 15 minutes.
- 9 A machine cuts and wraps the bubble gum.
- 10 A machine weighs and packs the bubble gum into boxes which are sealed to keep it fresh.

GRAMMAR:

3. Look at the following Grammar Table and choose the right answers in brackets [...].

	Active Voice	Passive Voice
Affirmative	Somebody pours gum base into a mixer.	Gum base is poured into a mixer.
Negative	They don't use natural ingredients for bubble gums	Natural ingredients aren't used for bubble gum
Question	How do they produce bubble gum?	How is bubble gum produced?
The Active Form	Subject + Verb + Object Somebody pours gum base ...	
The Passive Form	[Subject/object] of an active sentence + IS/ARE/AM + [infinitive/past participle - 3 rd form] (+ the rest of the sentence)	
Using Passive	It [is/isn't] important to say who performs an action in a passive sentence. If you want to add an agent to the sentence you use "by + doer", e.g. "products are transferred by car".	

How is bubble gum made – Passive Voice

4. Transform the sentences describing bubble gum production into passive voice sentences.

1. A gum base is poured into a mixer and color and flavoring is added.
2. Glucose syrup **IS ADDED** to the mixture.
3. The ingredients **ARE BLENDED** for about 20 minutes to put everything together.
4. The mixture is ready when it looks like a bread dough.
5. The **MIXTURE** is **TRANSFERRED** to **ANOTHER MACHINE**
6. The mixture **IS SQUEEZED TO CREATE THIN STRIPS OF GUM**
7. **THE MIXTURE IS SQUEEZED** to the size of **BUBBLE GUM**.
8. **THE GUM IS** cooled in a **COOLING CHAMBER FOR 15 MINUTES**
9. **BUBBLE GUM IS CUT** and wrapped.
10. **BUBBLE GUM IS WEIGHED AND PACKED INTO BOXES WHICH ARE SEALED TO KEEP IT FRESH.**

5. The Teacher will give each person a process. In pairs, describe each process using passive voice. The linking phrases below will help you:

First,..... Next,..... Then,..... After that,..... Finally,.....

See the next page for processes that are to be handed out.

6. Select two of the processes below and talk through their steps using passive voice when appropriate:

- sending an e-mail
- withdrawing money from an ATM
- running a team meeting
- preparing a meal
- making a cup of coffee
- doing online shopping
- updating system
- responding to emergency
- resolving problems/issues
- applying for a bank loan

PROCESS A



PROCESS B

